

Research and Innovation at Agriculture Victoria

1. Overview of Victorian Agriculture
2. Agriculture Victoria Research
3. Agtech Regional Innovation Network
4. SmartFarms
5. AgriBio – Centre for AgriBioscience

Professor German Spangenberg PSM FTSE
October 2022

AGRICULTURE VICTORIA



Section 1: Overview - Agriculture in Victoria



Agriculture in Victoria is an economic driver for regional economies and part of the social structure of rural communities.

It manages just over half the land in the state, is the major water user and a contributor to climate change, as well being part of the solution.

\$17.5 billion

Gross value of agriculture production in 2020-21 (latest data)

67,100 jobs

In agricultural production

21,700 farms

Commercial agricultural businesses

11.3 M ha

Farmers manage half of Victorian land (51 per cent)

27 per cent

Of total national food and fibre exports

Snapshot of agriculture in Victoria

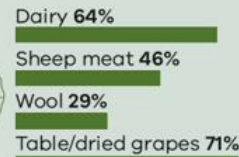
Victoria is Australia's second largest agricultural producer

Major industries by gross value (2020-21)

- Horticulture (\$3.94bn)
- Grains (\$3.55bn)
- Dairy (\$2.86bn)
- Sheep (\$2.62bn)
- Beef (\$2.58bn)



Victoria is Australia's #1 producer (by value) of:



Farming businesses

21,700
Farming businesses in 2019-20

25% of all Australian farms are in Victoria

Majority of farming businesses produce*



*Some farms produce multiple commodities. Adding individual industry businesses is thus not recommended.



Exports value



\$14B
Total food and fibre exports in 2020-21

Victoria is Australia's largest food and fibre exporting state – accounted for 27% of total exports from just 3% of Australia's arable land mass

47% Of all Victorian goods exports accounted for by food and fibre exports

Victoria's top 5 valuable food exports



Top 5 most valuable export markets



* Some data still being updated to 2020-21

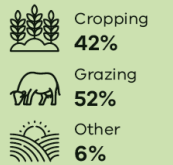


Farmland



11.3 million ha
Victoria's land area used for agricultural production in 2019-20

Of the total agricultural land



50% Estimated area of Victoria's landmass managed by agricultural businesses



Employment



67,100
People employed in agriculture production (year to November 2021)



76,700
Jobs in food and beverage manufacturing production (year to November 2021)

Employment by agricultural industry



78% Share of Agriculture, Forestry and Fishing jobs in regional Victoria



How much was produced in 2019-20?

Victoria's grain production
8.4 million tonnes



Victoria's beef and veal production
21% of Australia's production
495,000 tonnes



#1 sheep meat producer in Australia
46% of national production
315,000 tonnes



#1 dairying state – produced two-thirds of Australia's milk
5.6B litres of milk



Victoria's horticultural production
1.4 million tonnes



Industry value add

\$9.3B Agriculture's contribution to Victoria's economy in 2020-21

\$8.3B Food and beverage processing contribution to Victoria's economy in 2020-21

~2% Agriculture's share of Victoria's gross state product (GSP)



Diverse climate, diverse products

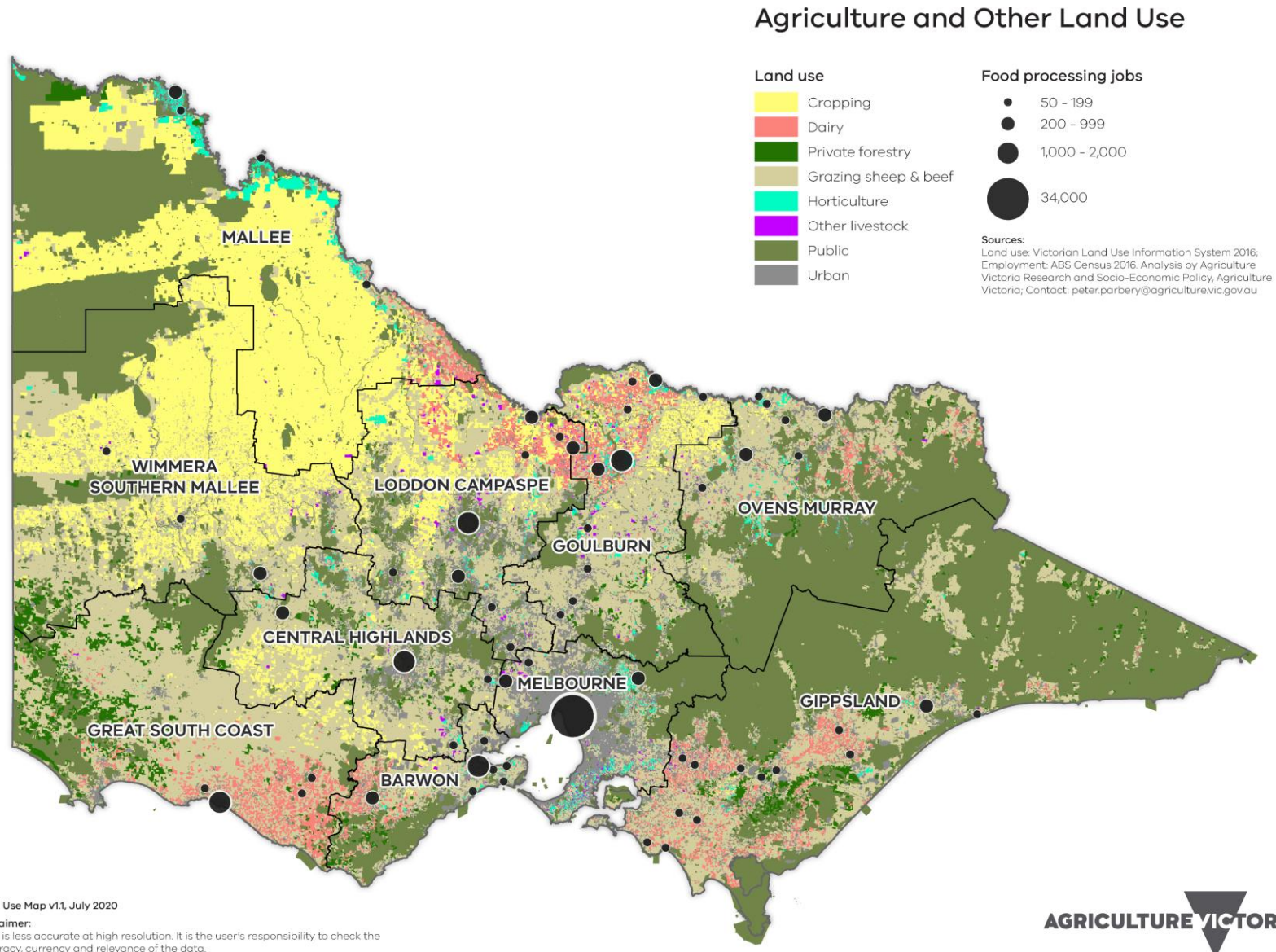
Victoria has a moderate yet diverse climate ideal for many different agricultural sectors.

The state records Australia's second highest average annual rainfall, has diverse soil types and quality pastures for livestock.

Victoria's compact size provides access to export and domestic markets, including food manufacturing.

- Grains production is concentrated in Victoria's north west.
- There are three dairy production regions, pasture based in the south and irrigation based in the north.
- Horticulture is concentrated around Melbourne, along the Murray River, and in other areas with access to irrigation.
- Beef and sheep production are more distributed across the state.

The 2016 VLUIS data used in this map is currently being updated and will be available later this year.





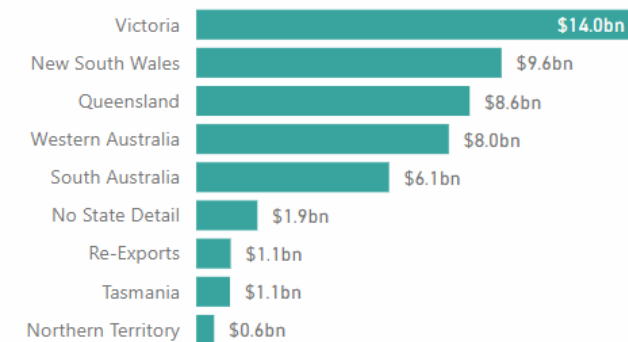
Victoria is Australia's leading food exporter

In 2020-21 Victoria was Australia's largest food and fibre exporting state with 27 per cent of total exports.

- This was a small decline in exports, driven principally by reduced meat exports.
- This reflected COVID-related labour shortages in meat processing, and strong domestic demand from farmers restocking in response to good seasonal conditions following years of drought.



In 2020-21, Victoria was Australia's largest food and fibre exporting state - accounting for 27% of total exports



Country	Value (\$)
China	\$3,693,208,835
United States	\$1,129,120,529
Japan	\$1,107,027,791
New Zealand	\$836,802,372
Indonesia	\$617,155,002

Victorian food and fibre exports by industry, 2020-21



Section 2: Agriculture Victoria Research



Agriculture Victoria works to grow and protect profitable, sustainable farms in thriving regional and rural communities across Victoria.

Agriculture Victoria Research's research and innovation priorities are to:

Agriculture Strategy

Deliver outcomes that work to recover, grow, modernise, protect and promote Victorian agriculture industries through the Victorian Government Agriculture Strategy: Strong, Innovative, Sustainable.

Industry

Work with industry to co-design, co-invest and co-deliver research and innovation under the National Primary Industries Research, Development and Extension Framework.

Climate change

Support Victorian agriculture to respond to climate change.

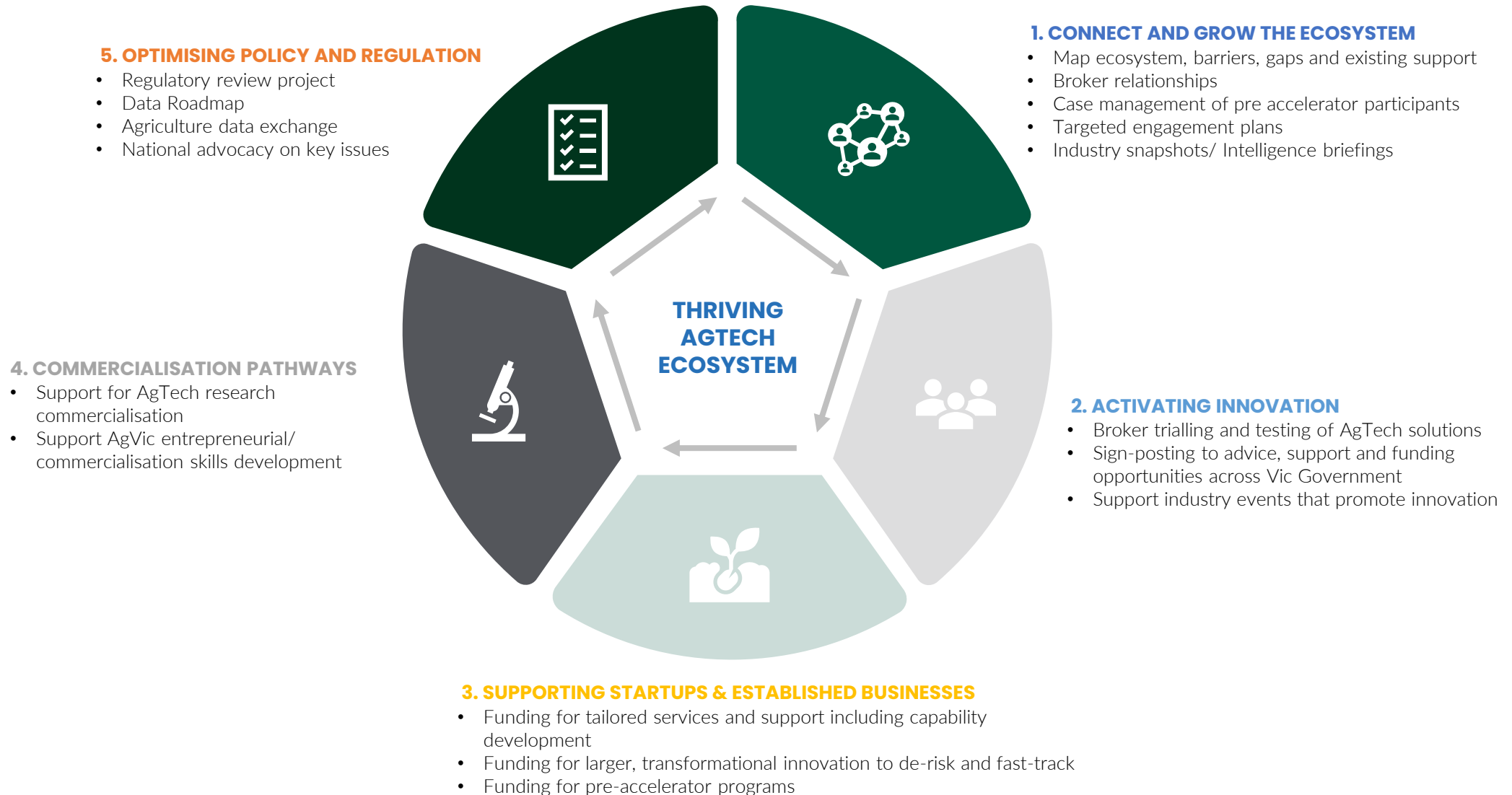
Smarter farms

Deliver smarter farms through science, innovation and digital agriculture.

Biosecurity and animal welfare

Strengthen biosecurity and animal welfare to protect food and jobs.

Section 3: Agtech Regional Innovation Network



Section 4: SmartFarms



Partnership

with industry, agribusiness, the education sector and regional communities

Gateways

to research, innovation and technology, and skills development for Victoria's major agriculture industries

Regional benefits

attracting agtech businesses and the world's best science across Victoria's agricultural regions

Connected

to each other and the leading-edge big data and systems biology capabilities at AgriBio



Science innovation clusters

Innovation precincts with 'hub and spoke' model and 'SmartFarms'

Ellinbank SmartFarm

- Dairy research

Tatura SmartFarm

- Perennial horticulture research focused on pears, apples and stone fruits

Hamilton SmartFarm

- Grains, dairy and pasture research

Horsham SmartFarm

- Grains research, including grains for alternative proteins

Mildura SmartFarm

- Perennial horticulture research focused on temperate nuts

AgriBio – Centre for AgriBioscience

- Plant, animal, and microbial systems biology (from genome to phenome)
- Plant and animal biosecurity diagnostics
- Research commercialisation
- Medicinal agriculture
- Joint venture with La Trobe University



Section 5: AgriBio – Centre for AgriBioscience



Joint facility of Victorian Government and La Trobe University

An investment of **\$288 million**

Joint venture with 300 staff from Agriculture Victoria and 100 staff from La Trobe University

With over **80+ PhD students**

Collaboration designed for collaboration